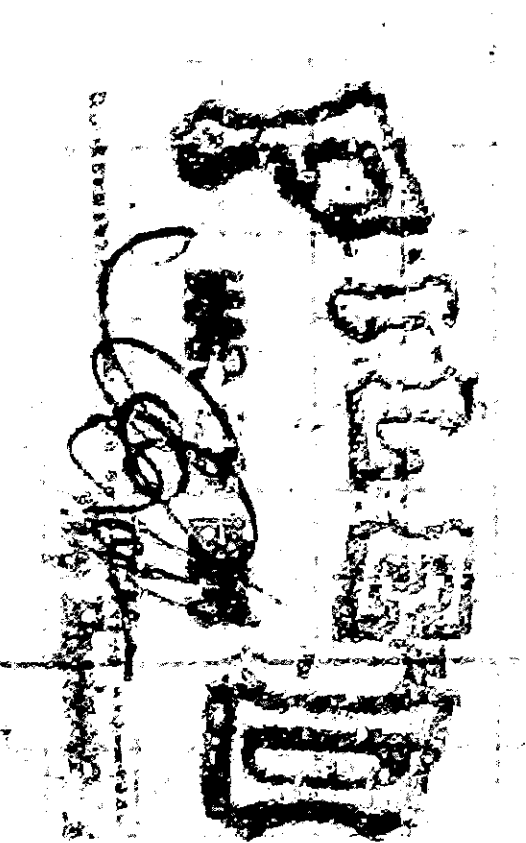


PART NO. 1
SHEET NO. 2
PLAN NO. 735
FOR SEWER IN
SCENIC DRIVE
BETWEEN
COLTON AVENUE
AND
SOUTH CITY LIMITS
Scale 1"=40'

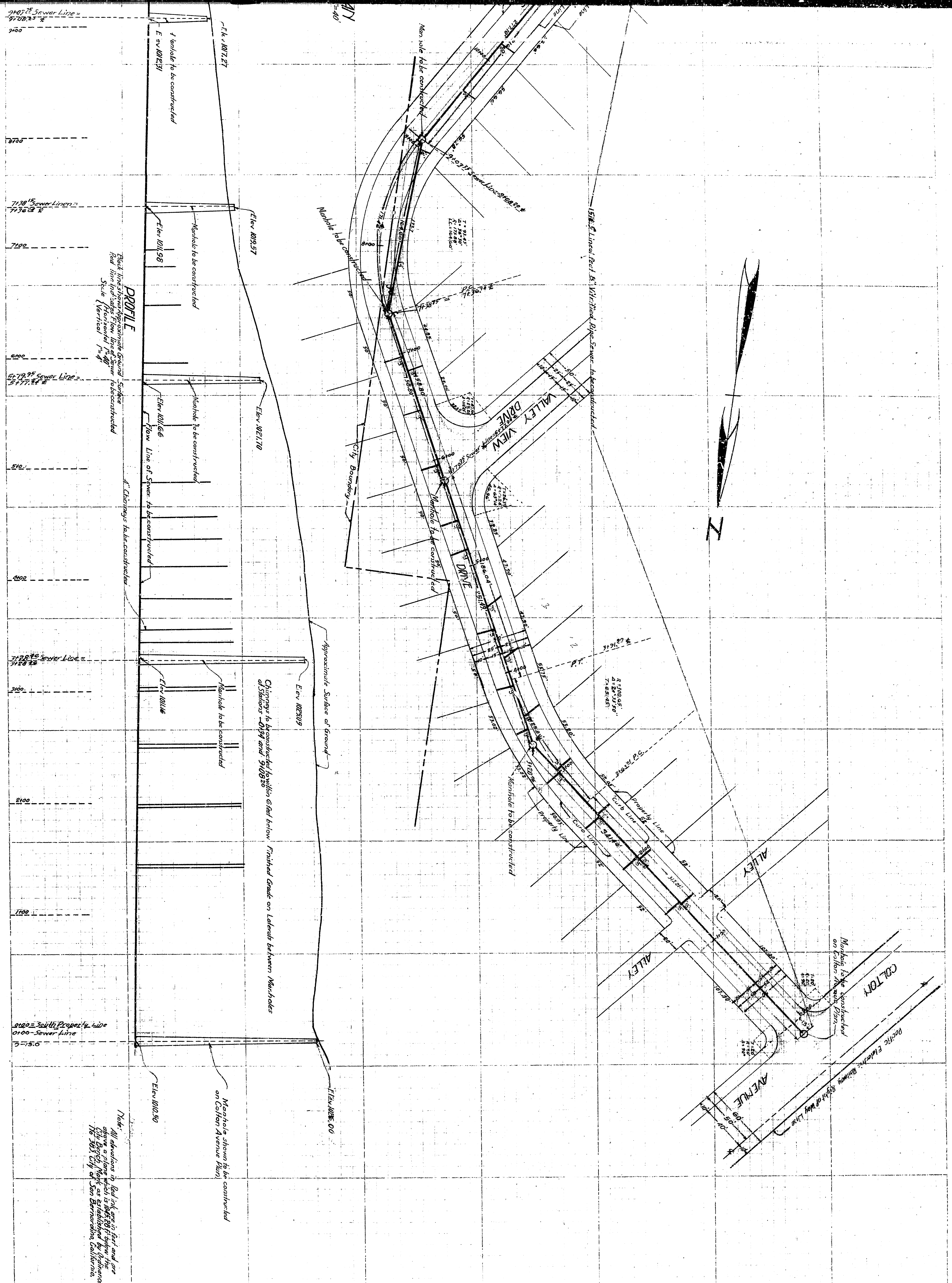


TITLE TO STREET
Title to SCENIC DRIVE by Dedication of the
SCENIC AVENUE Subdivision as recorded in
Book 28 of Maps, Page 52 Records of San Bernardino
County, California.

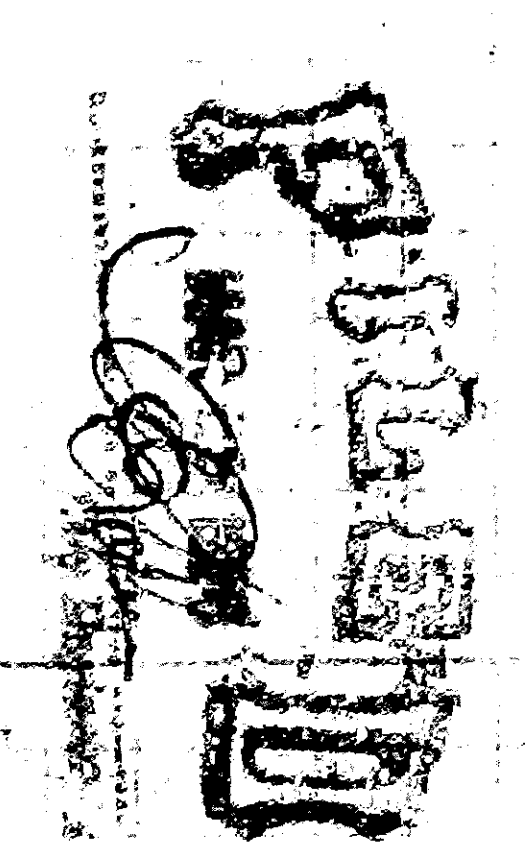
GRADE ORDINANCE
Grade of Scenic Drive established by Ordinance No. 1208

DETAIL OF SEWER
Lineal Feet of 4" Vertical Pipe Sewer to be constructed --- 134.82'
Lineal Feet of 6" Vertical Pipe Sewer to be constructed --- 13.20'
Number of 4" Vertical Pipe Sewer Manholes to be constructed --- 2
Number of 6" Vertical Pipe Sewer Manholes to be constructed --- 2
Number of Manholes to be reconstructed --- 2
Lineal Feet of 4" Vertical Pipe Sewer to be reconstructed with
4" changes and connecting services --- 393'
20'

Note: All elevations in feet unless otherwise noted and are
shown on a plane which is 2.54 ft above the
mean sea level datum of San Bernardino, California.
18 581 City of San Bernardino, California



PART NO. 1
 SHEET NO. 2
 PLAN NO. 735
 FOR SEWER IN
 SCENIC DRIVE
 BETWEEN
 COLTON AVENUE
 AND
 SOUTH CITY LIMITS
 Scale 1"=40'

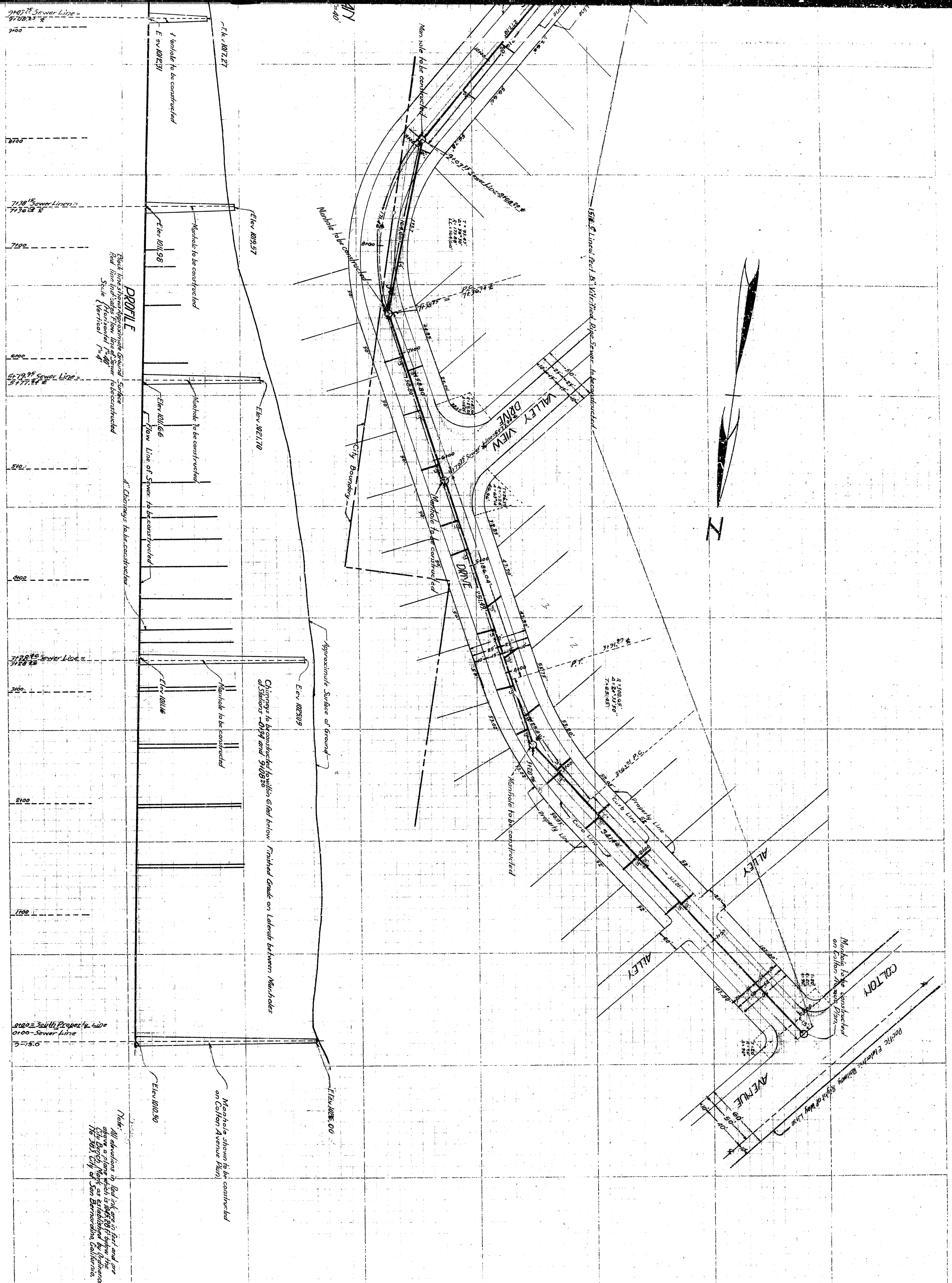


TITLE TO STREET
 Title to SCENIC DRIVE by Dedication of the
 SCENIC HIGHL. Subdivision as recorded in
 Book 28 of Maps, Page 52 Records of San Bernardino
 County, California.

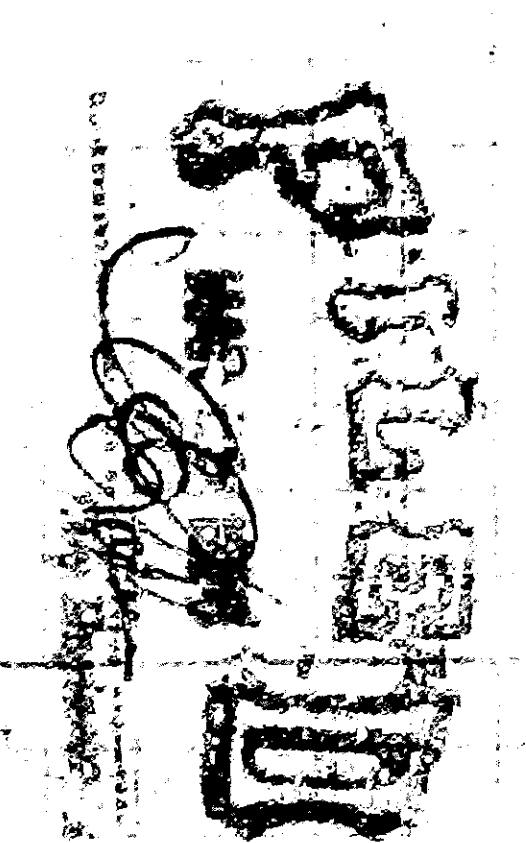
GRADE ORDINANCE
 Grade of Scenic Drive established by Ordinance No. 1208

DETAIL OF SEWER
 Lineal Feet of 4" Vertical Pipe Sewer to be constructed --- 134.82'
 Lineal Feet of 6" Vertical Pipe Sewer to be constructed --- 13.20'
 Number of 4" Vertical Pipe Sewer Manholes to be constructed --- 2
 Number of 6" Vertical Pipe Sewer Manholes to be constructed --- 2
 Number of 4" Vertical Pipe Sewer to be constructed --- 1
 Number of 6" Vertical Pipe Sewer to be constructed --- 1
 Number of 4" Vertical Pipe Sewer Branches to be installed with
 4" changes and connecting services --- 20

NOTE: All elevations in feet and inches are shown on this plan and profile. The elevations shown on this plan and profile are based on the datum of Mean Sea Level. The elevations shown on this plan and profile are based on the datum of Mean Sea Level. The elevations shown on this plan and profile are based on the datum of Mean Sea Level.



PART NO. 1
SHEET NO. 2
PLAN NO. 735
FOR SEWER IN
SCENIC DRIVE
BETWEEN
COLTON AVENUE
AND
SOUTH CITY LIMITS
Scale 1"=40'



TITLE TO STREET
Title to SCENIC DRIVE by Dedication of the
SCENIC AVENUE Subdivision as recorded in
Book 28 of Maps, Page 52 Records of San Bernardino
County, California.

GRADE ORDINANCE
Grade of Scenic Drive established by Ordinance No. 1264

DETAIL OF SEWER
Lineal Feet of 4" Vertical Pipe Sewer to be constructed --- 134.82'
Lineal Feet of 6" Vertical Pipe Sewer to be constructed --- 13.20'
Number of 4" Manholes with connecting sewers to be constructed --- 2
Number of 6" Manholes with connecting sewers to be constructed --- 2
Number of Manholes to be constructed --- 4
Lineal Feet of 4" Vertical Man Sewer to be constructed --- 393'
Number of 4" Vertical Man Sewer Branches to be installed with
4" changes and connecting sewers --- 20

Note: All elevations in feet unless otherwise noted and are
shown on a plane which is 4.00 feet above the
mean sea level. The elevations shown on this plan
are based on the datum of the Pacific Electric Railway
at Colton, California.

Changes to approximate elevations given below. Finished grade on laterals between manholes
of Stations 4044 and 5108.50

Profile
Scale: Horizontal 1"=40'
Vertical 1"=4'